

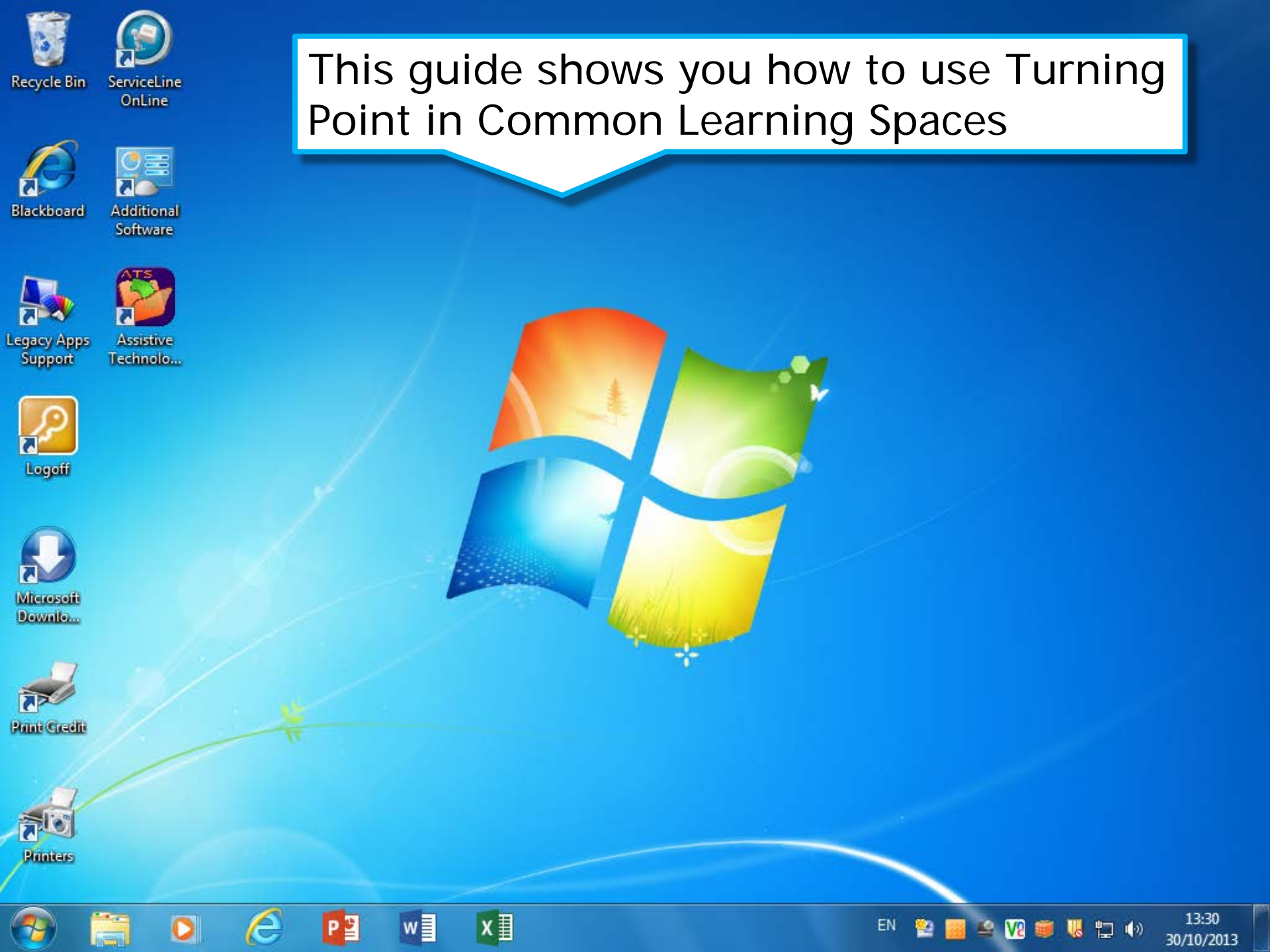
How to use Turning Point zappers in a Common Learning Space

Adam Warren

a.j.warren@soton.ac.uk

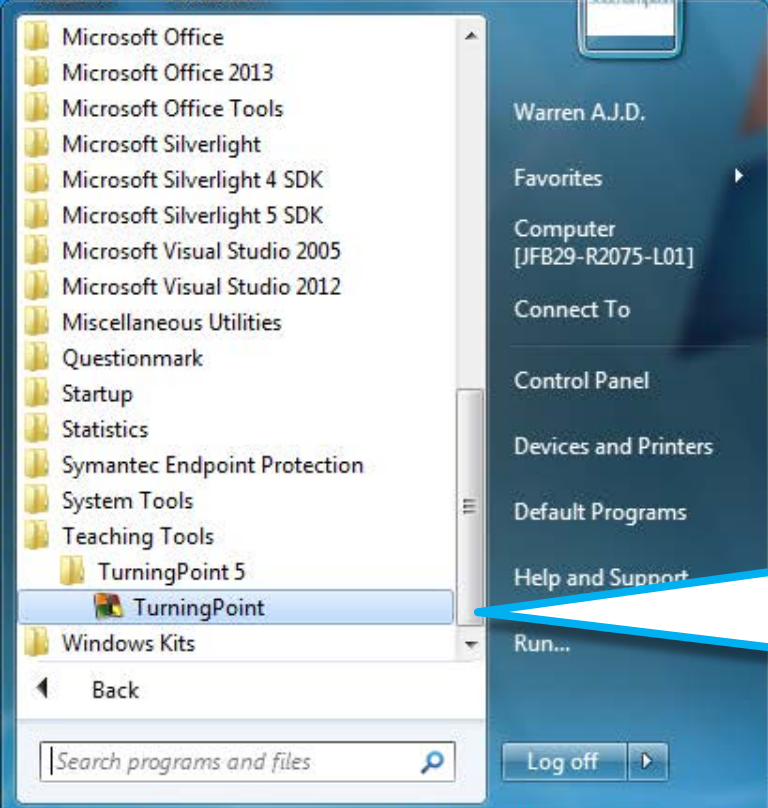
Centre for Innovation in Technologies and Education

This guide shows you how to use Turning Point in Common Learning Spaces



Insert the receiver into one of the PC's USB ports.





Log on to the bench PC and start Turning Point. You can find it on the **Start** menu under **All Programs > Teaching Tools**





Programs (2)

- TurningPoint
- turn_off_IE_autodetect.vbs

Control Panel (61)

- Turn screen saver on or off
- Turn automatic updating on or off
- Turn Windows features on or off

See more results

turn

Log off

Location: TurningPoint (C:\Program Files (x86)\Turning Technologies\TurningPoint 5\Application)

Alternatively, just type 'turn' into the **Start** menu's **Search** box and click on Turning Point in the list of results.



TurningPoint Dashboard

Polling Content Manage

TurningTalk Feedback

Participants ☐ Anonymous


Auto

Receiver: 41

ResponseWare: Click to Connect


Content

None




PowerPoint® Polling

Deliver interactive PowerPoint presentations using seamlessly created



Anywhere Polling

Poll atop web pages, videos, documents or any application



Self-Paced Polling

Poll assessments, evaluations, and surveys that require participants to

In a significant change from the previous version, Turning Point 5 now provides a unified interface to all of the program's features. For example **Anywhere Polling** enables you to ask on-the-fly questions with any application, not just PowerPoint.

30/10/2013

Polling

Participants

☐ An

Auto

TurningTalk


Feedback

ResponseWare:
[Click to Connect](#)

To use a PowerPoint presentation that includes question slides, click on **PowerPoint Polling**.

Content

None




PowerPoint® Polling

Deliver interactive PowerPoint presentations using seamlessly created PowerPoint slides or imported TurningPoint question lists.



Anywhere Polling

Poll atop web pages, videos, documents or any application using a floating interactive toolbar.



Self-Paced Polling

Poll assessments, evaluations, and surveys that require participants to work at their own pace.



Help

TurningPoint®
by Turning Technologies

Preferences

EN

16:49
30/10/2013

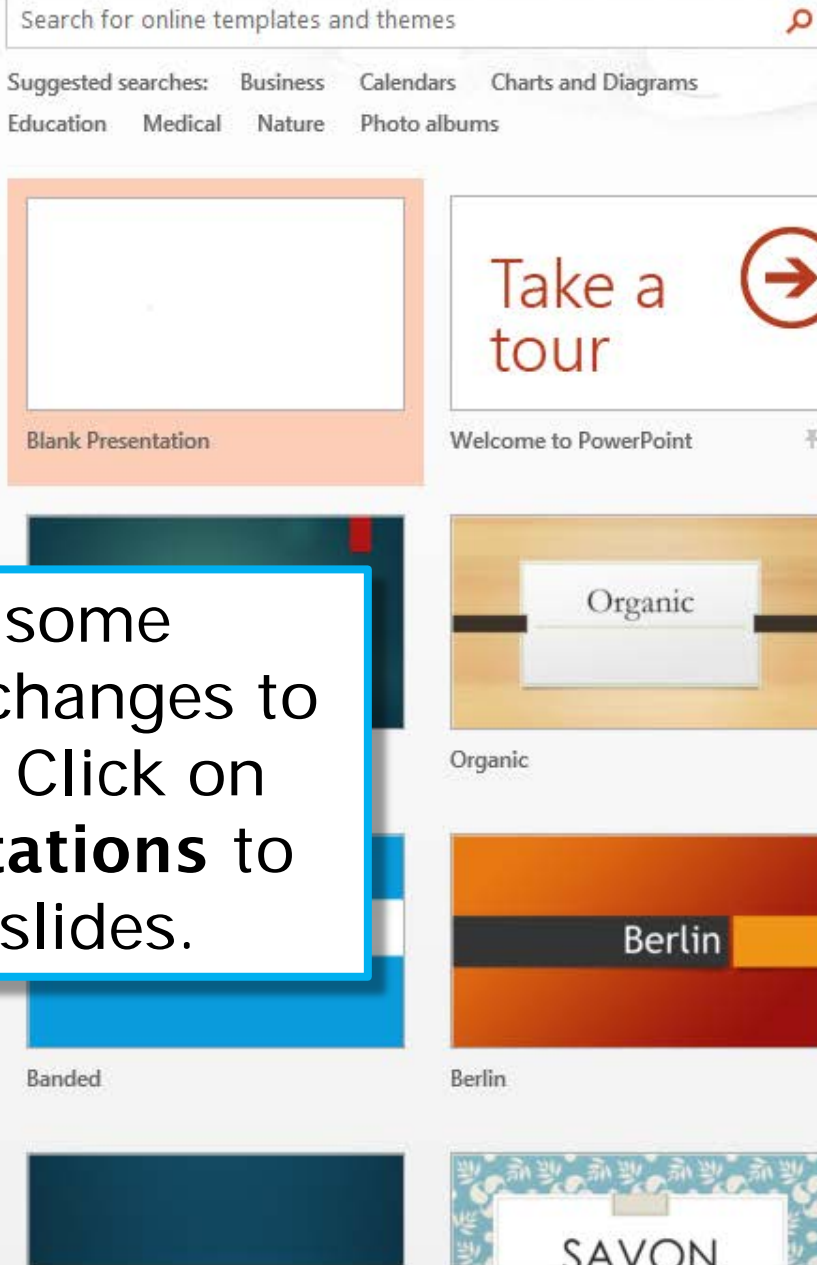
PowerPoint

Recent

 Zappers 2014.pptx
\\filestore.soton.ac.uk » users » ajdw »...

 Open Other Presentations

Office 2013 also has some significant interface changes to the previous version. Click on **Open Office Presentations** to locate and load your slides.



Open

Recent Presentations

University of Southampton

SkyDrive

Computer

+ Add source

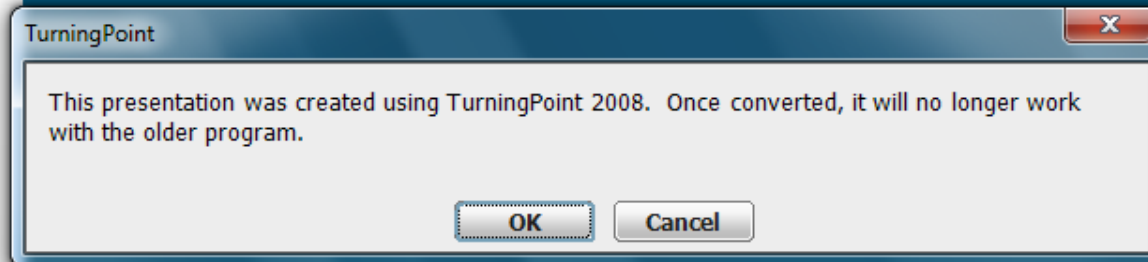
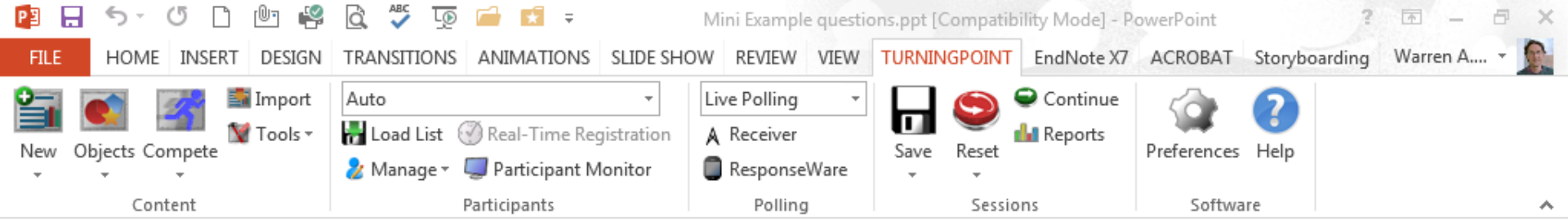
Computer

Recent Folders

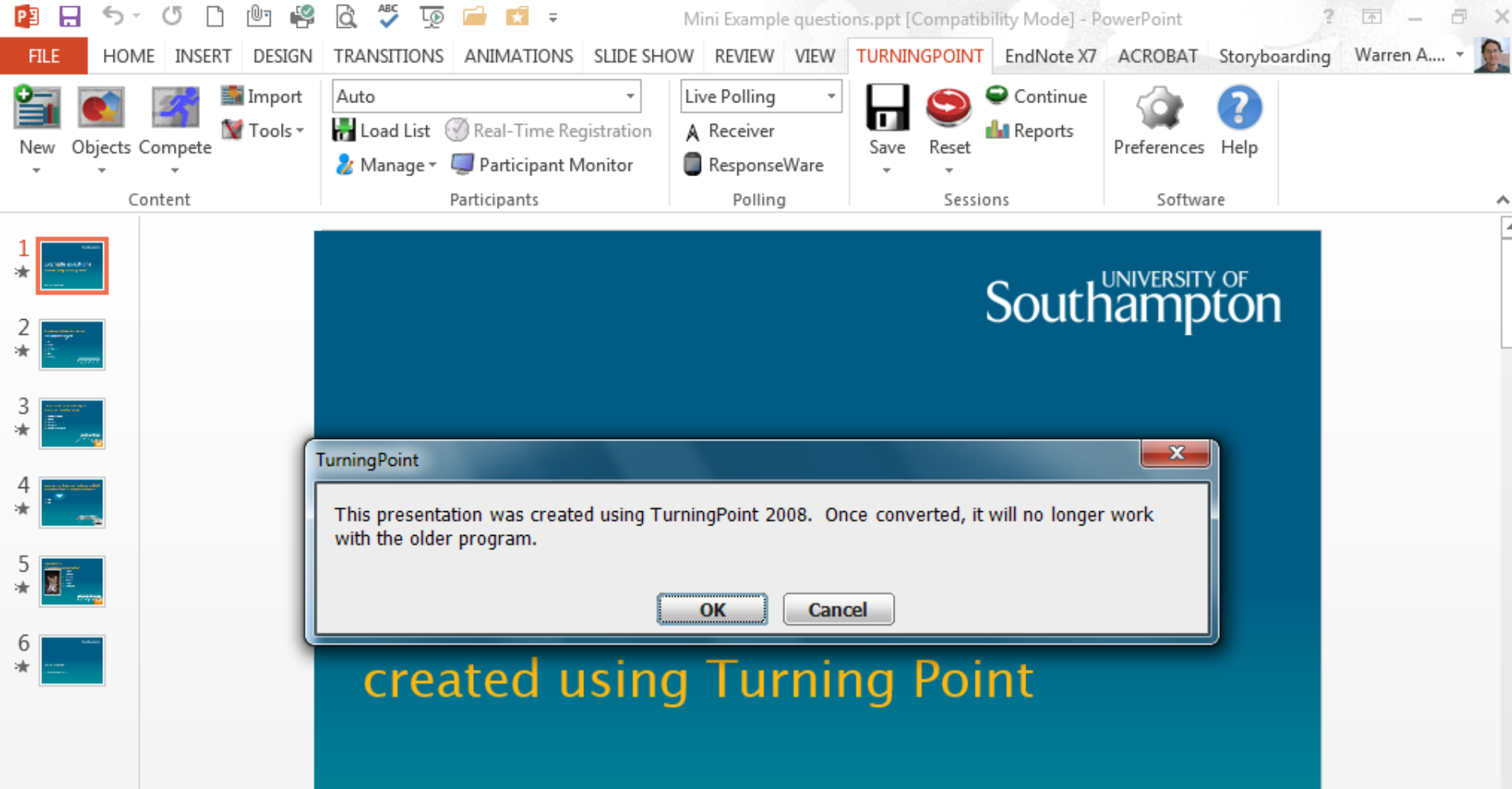
training
\\filestore.soton.ac.uk » users » ajdw » mydocuments » Adam's Work Area » I...
mydocuments
Desktop

Browse

Click on **Computer**
and then browse to
locate and open the
PowerPoint file.



If your presentation was created using an older version of Turning Point, a dialog box warns you that the file will be automatically converted. If you save the file, it can no longer be opened by older versions. Make sure you upgrade your office PC or laptop to version 5 to avoid this being a problem.



The automatic conversion does not always work perfectly, especially for presentations created in Turning Point 2. We recommend that you convert your presentations on your office PC or laptop and check they work as expected before using them with students.

Mini Example questions.ppt [Compatibility Mode] - PowerPoint

FILE HOME INSERT DESIGN TRANSITION ANIMATION SLIDE SHOW REVIEW VIEW **TURNINGPO** EndNote X7 LearningGui ACROBAT Storyboardin Warren A....

New Objects Compete Tools Import

Auto Load List Real-Time Registration Manage Participant Monitor

Live Polling Receiver ResponseWare

Save Reset Continue Reports

Preferences Help

Content Participants Polling Sessions Software

Note the new-look Turning Point ribbon, which organises and displays the controls using a clearer layout.

Example questions

created using Turning Point

Adam Warren

Click to add notes

Import
 Tools

Auto
 Load List
 Real-Time Registration

Manage
 Participant Monitor

Live Polling
 Receiver
 ResponseWare

Save
 Reset

Continue
 Reports

Preferences
 Help

Exam created

Adam Warren

Reset Session

Reset the session data for a new presentation, or reset the charts to add to the data already loaded.

TurningPoint
Tell me more

The **Reset** button should always be used at the start of a session to make sure that any previous voting data is cleared before your students vote.

A question to test your zapper

What did you drink with your breakfast this morning?

1. Tea
2. Coffee
3. Fruit Juice
4. Water
5. Other
6. Nothing

Note the **showbar** at the top of the screen which shows information about the voting. The green area shows that polling is open and students can vote.

You should always include a test question so your students can check that their zapper is working.

A question to test you

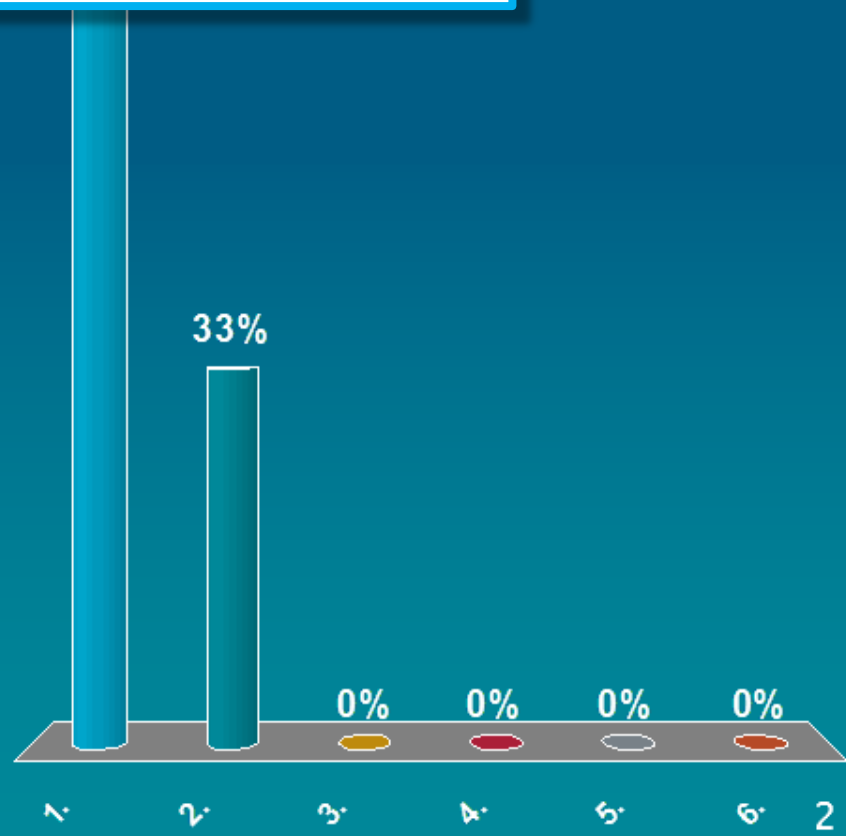
What did you drink with your breakfast this morning?

1. Tea
2. Coffee
3. Fruit Juice
4. Water
5. Other
6. Nothing

Click the mouse to close polling – note the green area turns red.

Click again to display the results of the vote.
The #|% button on the showbar can be used to display the number of votes or the percentage for each answer.

- 1. Tea
- 2. Coffee
- 3. Fruit Juice
- 4. Water
- 5. Other
- 6. Nothing



When you close PowerPoint at the end of the session, a dialog asks if you want to save the changes. In most cases, you can safely choose **Don't Save**; only click **Save** if you want to save the voting charts as they appear.

The screenshot shows a PowerPoint presentation titled "Mini Example questions.ppt". The slide content is as follows:

A question to test your zapper

What did you drink with your breakfast?

1. Tea
2. Coffee
3. Fruit Juice
4. Water
5. Other
6. Nothing

A bar chart is displayed on the right side of the slide, showing the results of the poll. The chart has six bars corresponding to the options in the list. The first bar (Tea) is the tallest, reaching 33%. The second bar (Coffee) is also visible. The third, fourth, and fifth bars are very short, each labeled 0%.

A "Microsoft PowerPoint" dialog box is overlaid on the slide, asking: "Want to save your changes to Mini Example questions.ppt?". The dialog box has three buttons: "Save", "Don't Save", and "Cancel".

On the right side of the slide, there are two sections: "Polling Options" and "Scoring Options".

At the bottom of the slide, there is a text box that says "Click to add notes".

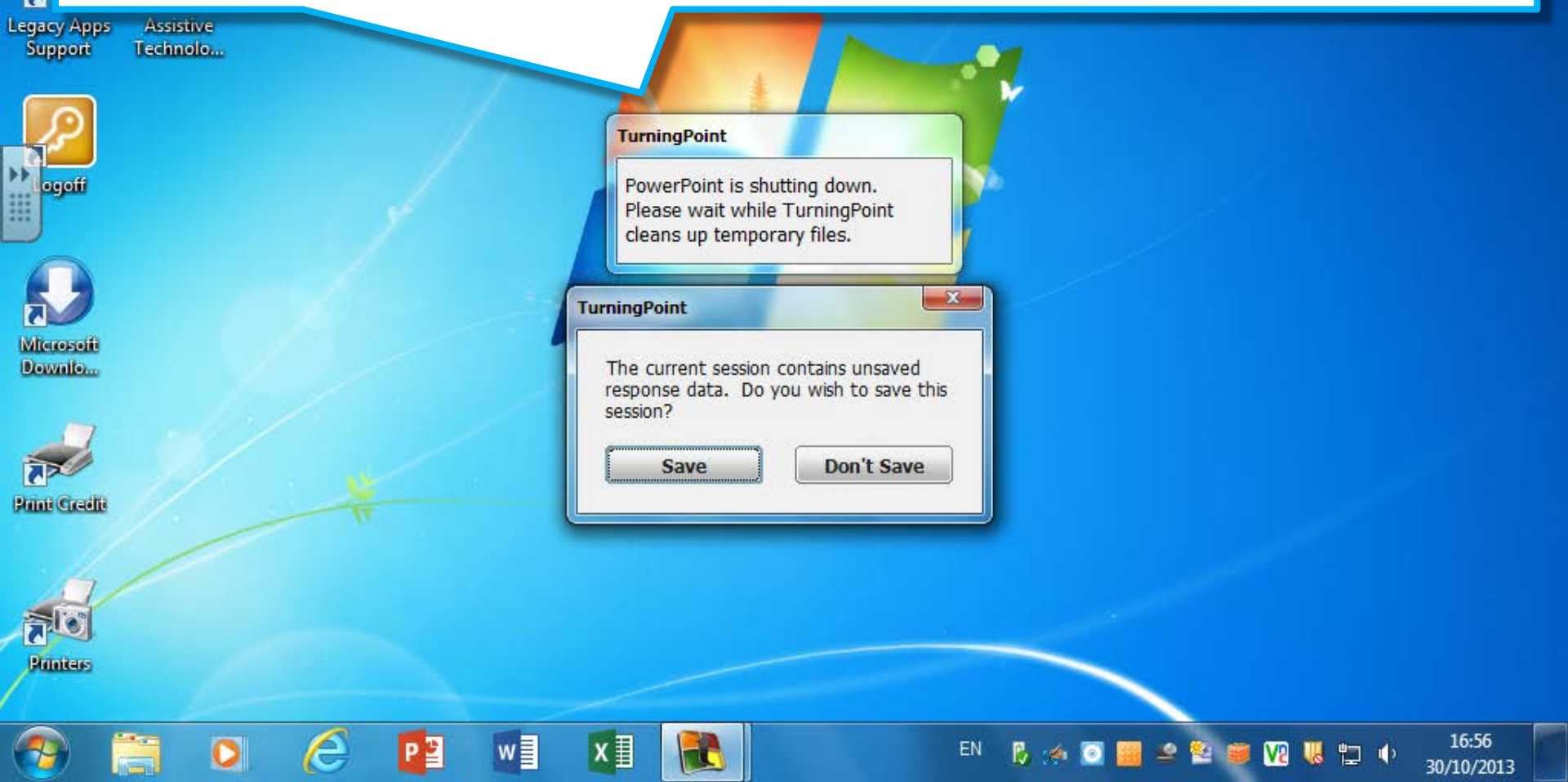
The status bar at the bottom of the PowerPoint window shows "SLIDE 2 OF 6", "ENGLISH (UNITED KINGDOM)", and "NOTES".

The Windows taskbar at the bottom shows the Start button and several open applications: File Explorer, Internet Explorer, PowerPoint, Word, and Excel.

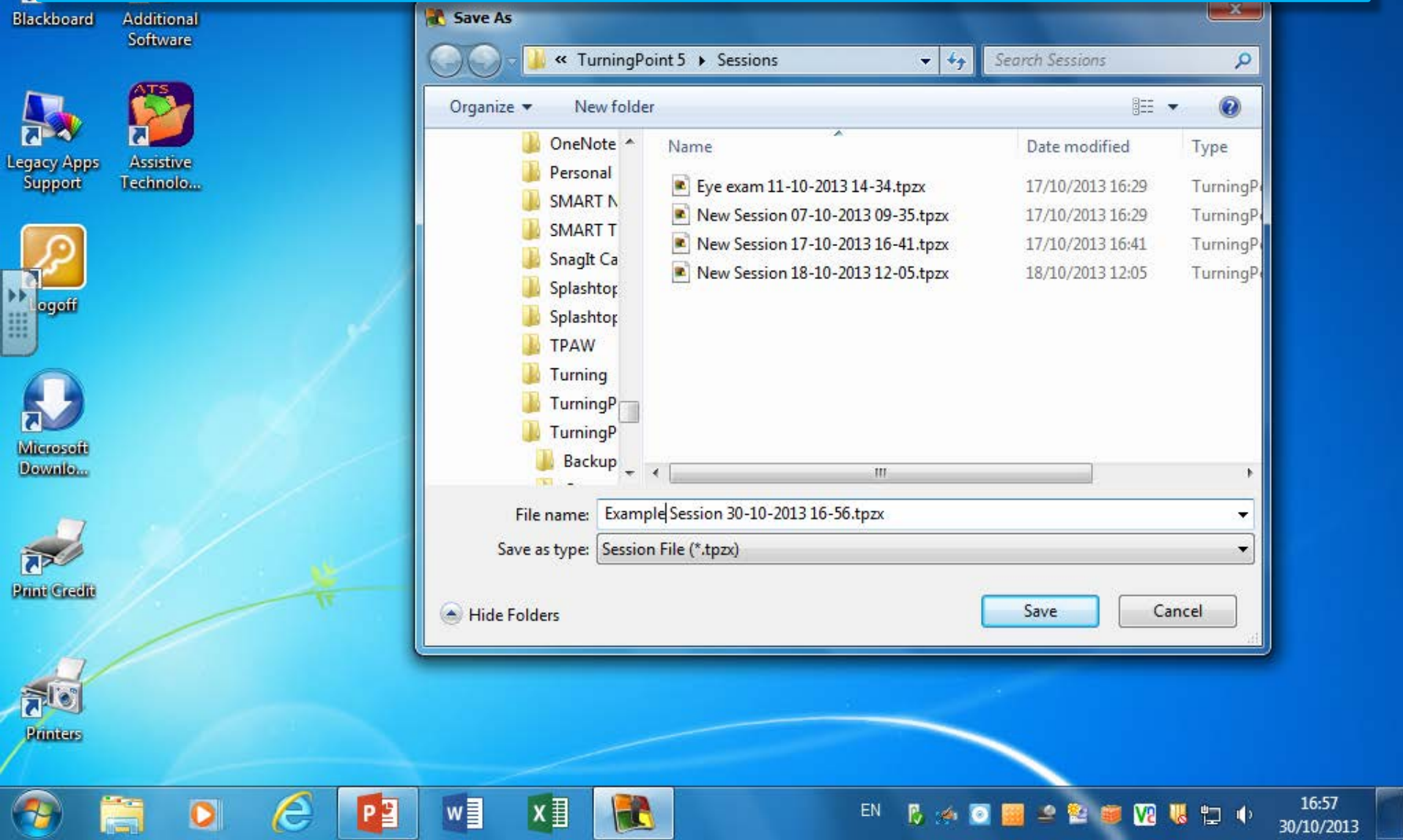
A "Convert to Demographic" button is located in the bottom right corner of the slide.

A second dialog asks if you want to save the response data. In most cases, click **Save** so you can review and analyse the voting data.

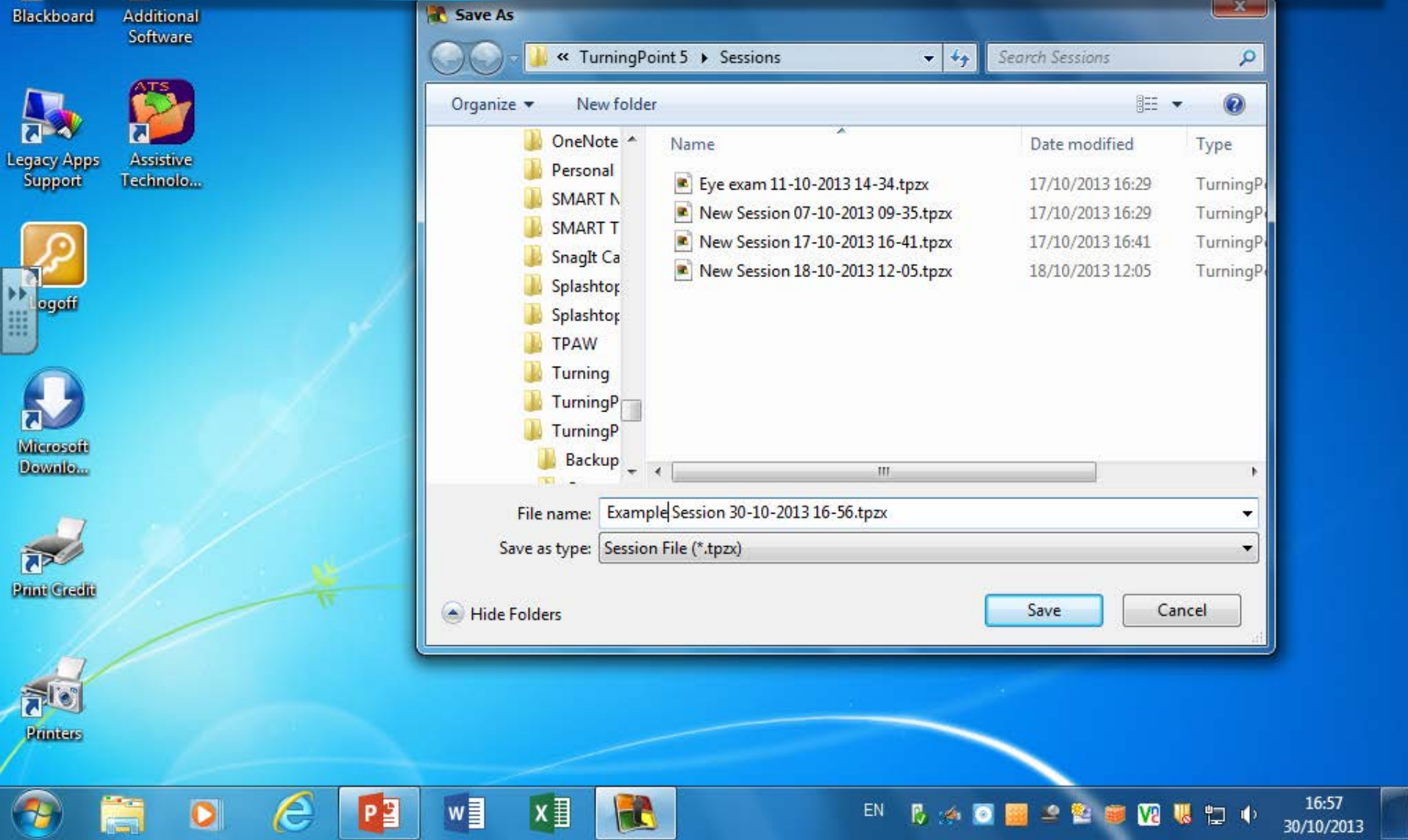
If you click **Don't Save**, the voting data will be discarded and cannot be recovered later.



The voting data is saved by default to the **Turning Point** folder in **My Documents**. You should edit its name to make it easy to identify the session later.



You can save the data file to a USB drive instead if you prefer, but will need to import it into Turning Point before you can view or analyse it.



TurningPoint Dashboard

Polling Content **Manage** TurningTalk Feedback

Participant List Session

Auto
Example Session 30-10-2013 16-56
Anonymous

Session Overview

Name: Example Session 30-10-2013 16-56
File Location: \\filestore.soton.ac.uk\users\ajdw\mydocuments\TurningPoint 5\Sessions\Example Session 30-10-2...

Number of Responders: 3
Number of Questions: 3
Average Score: 0.00%
Date Created: 30/10/2013 16:49:07
Date Modified: 30/10/2013 16:57:25

Edit Session Reports

Help TurningPoint[®] by Turning Technologies Preferences

Click the **Manage** tab to see a list of the data files you have saved.

Select a file and click the **Reports** button to review the data.

TurningPoint Dashboard

PollingContentManage

TurningTalkFeedback

ExportPrint

Results by Question

Session Name: Example Session 30-10-2013 16-56

Date Created: 30/10/2013 16:49:07

Active Participants: 3 of 3

Average Score: 0.00%

Questions: 3

Find

Zoom: 100%

Options

Results by Question

1. A question to test your zipper (Multiple Choice)

	Responses	
	Percent	Count
Tea	66.67%	2
Coffee	33.33%	1
Fruit Juice	0%	0
Water	0%	0
Other	0%	0
Nothing	0%	0

67%

33%

0%

0%

0%

0%

Question

Close

Help

TurningPoint

by Turning Technologies

Preferences

The default report is **Results by Question**. Use the dropdown list to select a different report.

Polling



Export



Print

This is the **Results Detail** report, which shows how each zapper voted. Use the **Export** button to save this as an Excel file for further analysis.

Session Name: Example Session 30-10-2013 16-56

Date Created: 30/10/2013 16:49:07

Active Participants: 3 of 3

Average Score: 0.00%

Questions: 3

Results Detail

Device ID	Q1	Q2	Q3	Total Points	Score
Answer Key	-	-	-	0	-
18C055	1	3	1	0	-
18C075	1	2	1	0	-
18C0D9	2	1	1	0	-
Participant List Averages	-	-	-	0	-

Find

Zoom: 100%

Options

Participants

Participant Information:

☒ Device ID☒ Active Participants Only

Data

Question Results:

Answers

☐ Expand☒ Total Points☒ Score

Close



Help



TurningPoint[®]
by Turning Technologies



Preferences



Don't forget to remove the receiver at the end of the session and replace it in the zapper case. These receivers are expensive to lose!